

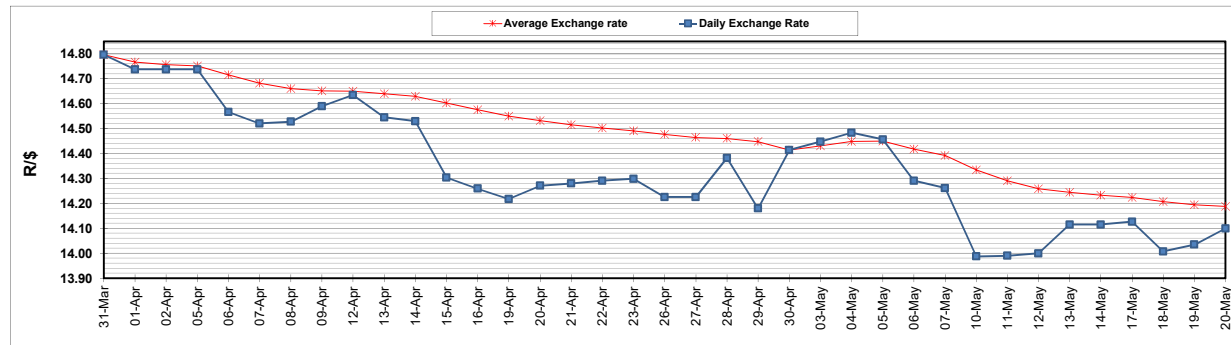
	PETROL 95 ULP	PETROL 93 ULP & LRP	DIESEL 0.05%	DIESEL 0.005%	ILL. PAR.
GAUTENG PUMP PRICE (SA c/l) AS FROM 05/05/2021	1,723.000	1,701.000	-	-	-
WHOLESALE PRICE (SA c/l) AS FROM 05/05/2021	-	-	1,446.620	1,450.020	857.488
SINGLE NATIONAL MAXIMUM RETAIL PRICE	-	-	-	-	1,076.000
BASIC FUEL PRICE - 20/05/2021 (SA c/l)	701.659	691.270	675.302	680.006	655.879
PRESS RELEASE CONTRIBUTION TO BFP 05/05/2021 - 20/05/2021 (SA c/l)	727.170	715.170	659.630	663.030	644.128
UNIT OVER/(UNDER) RECOVERY - 20/05/2021 (SA c/l)	25.511	23.900	(15.672)	(16.976)	(11.751)
AVERAGE BASIC FUEL PRICE 30/04/2021 - 20/05/2021	723.138	712.345	686.344	690.438	672.933
AVERAGE UNIT OVER/(UNDER) RECOVERY 30/04/2021 - 20/05/2021	5.832	4.625	(20.514)	(21.408)	(24.205)

ANALYSIS MOVEMENT OF AVERAGE OVER/(UNDER) RECOVERY

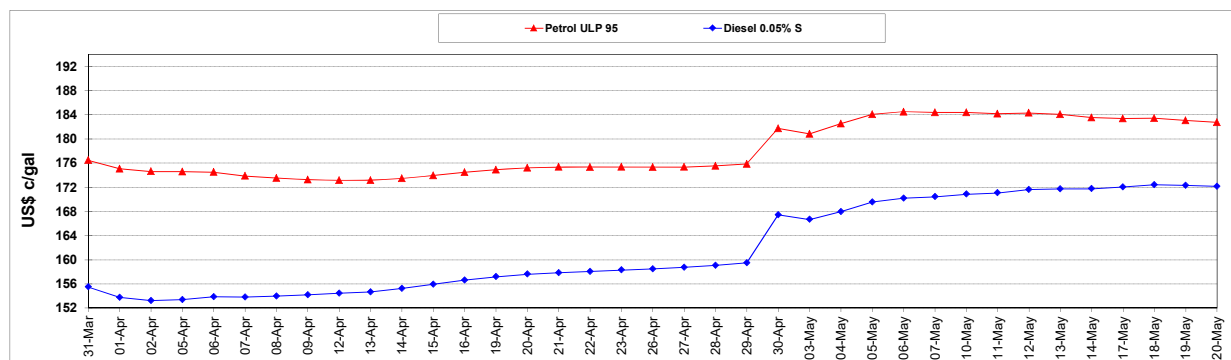
	PETROL 95	PETROL 93	DIESEL 0.05%	DIESEL 0.005%	ILL. PAR.
- MOVEMENT IN INTERNATIONAL PRODUCT PRICES	(7.389)	(8.398)	(33.062)	(34.031)	(36.508)
- MOVEMENT IN EXCHANGE RATE	13.221	13.023	12.548	12.623	12.303
AVERAGE UNIT OVER/(UNDER) RECOVERY 30/04/2021 - 20/05/2021	5.832	4.625	(20.514)	(21.408)	(24.205)

R/\$ EXCHANGE RATE - (R/\$14.0993- 20/05/2021)

EXCHANGE RATE USED IN BASIC FUEL PRICE



INTERNATIONAL PRODUCT PRICES OF BASKET USED IN BASIC FUEL PRICE



BASIC FUEL PRICE IN SA CENTS PER LITRE

